



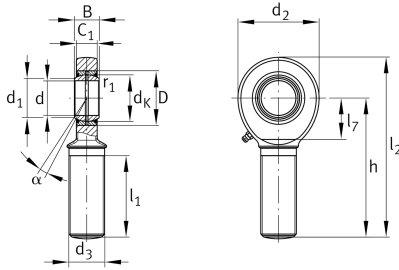
GAR25-DO-2RS

Rod end

Schaeffler ID:
0066340870000

Rod end with external thread, right hand thread, requiring maintenance, sliding contact surface: steel/steel, DIN ISO 12240-4, dimension series E, type M, sealed design

Technical information



Main Dimensions & Performance Data

d	25 mm	Bore diameter bearing
D	42 mm	Outside diameter bearing
B	20 mm	Width inner ring
C _r	48,300 N	Basic dynamic load rating, radial
C _{0r}	88,300 N	Basic static load rating, radial
	0.591 kg	Weight

Dimensions

d _K	35.5 mm	Ball diameter
d ₁	29.3 mm	Outer flange diameter inner ring
d ₂	64 mm	Outer eye diameter
d ₃	M24x2	Thread size
h	94 mm	Shank Length External thread rod
C ₁	17 mm	Width of the rod end
α	7 °	Tilt angle
l ₁	53 mm	Shank Length External thread head
l ₂	126 mm	Total length external thread head
l ₇	32 mm	Distance drilling with/shaft start
G _r	0,037 - 0,1 mm	Radial Clearance
d _{OT}	0 mm	Bore diameter bearing, upper tolerance
d _{UT}	-0.01 mm	Bore diameter bearing, lower tolerance
B _{OT}	0 mm	Width inner ring, upper tolerance
B _{UT}	-0.12 mm	Width inner ring, lower tolerance

Mounting dimensions

r _{1smin}	0.6 mm	Edge Spacing
--------------------	--------	--------------

Temperature range

T _{min}	-30 °C	Operating temperature min.
T _{max}	130 °C	Operating temperature max.